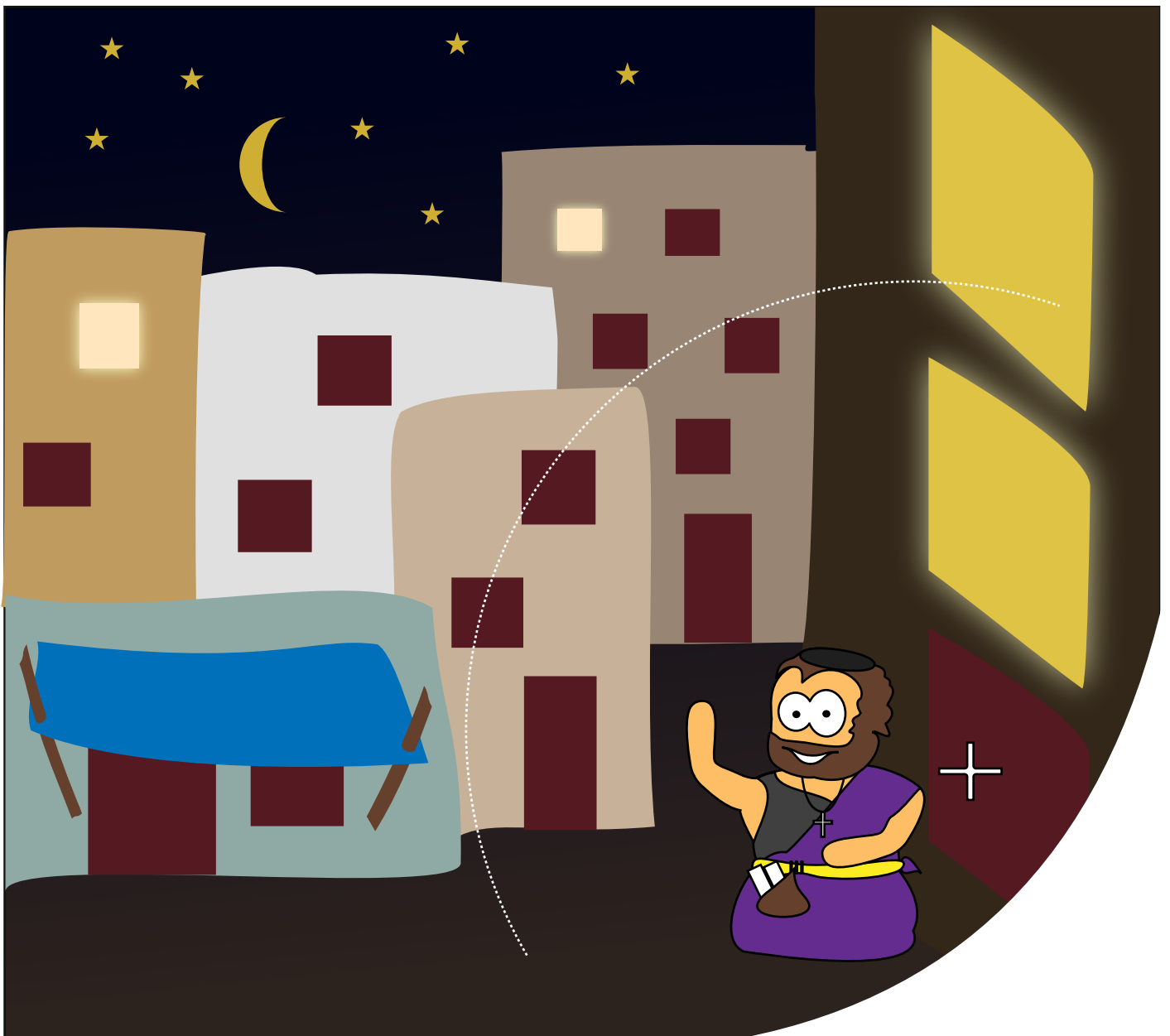
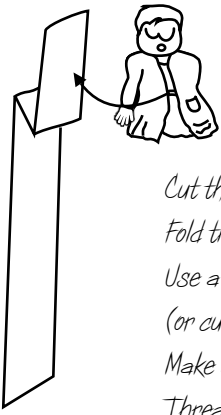


Instructions

Cut the pieces being careful around the figure of Eutychus
Fold the support along dotted lines as shown in illustration
Use a craft knife to cut the long dotted line of the background
(or cut from the bottom of the picture and tape back together)
Make a small hole where the X shapes indicate for the split-pin.
Thread Eutychus through the long slit, then put a split-pin
through the background and then through Eutychus' support
Fold the flap along the black dotted line and glue the right side
to the picture in the appropriate place covering the split pin head.





Instructions

Cut the pieces being careful around the figure of Eutychus
Fold the support along dotted lines as shown in illustration
Use a craft knife to cut the long dotted line of the background
(or cut from the bottom of the picture and tape back together)
Make a small hole where the X shapes indicate for the split-pin.
Thread Eutychus through the long slit, then put a split-pin
through the background and then through Eutychus' support
Fold the flap along the black dotted line and glue the right side
to the picture in the appropriate place covering the split pin head.

