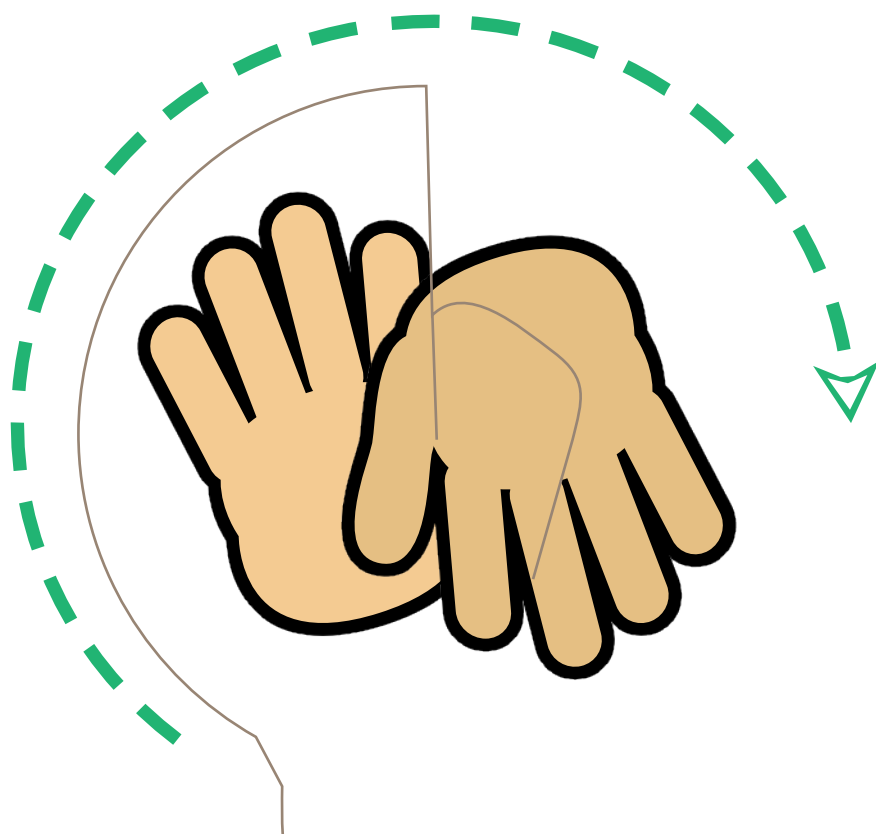


## Instructions

Cut lower section off  
 Cut following the grey lines  
 Leave the piece below attached to the card  
 Place piece 'A' behind the piece attached to card so  
 middle slits line up  
 Align middle slits of 'B' & 'C' & hook into the card pieces  
 Fold the small flat of piece 'B' over lower edge of card  
 and tape in place.  
 Tape the turn flats together.  
 Spin the card and watch it change!



Healed  
 by  
 Jesus'  
 touch