



Herod the Great

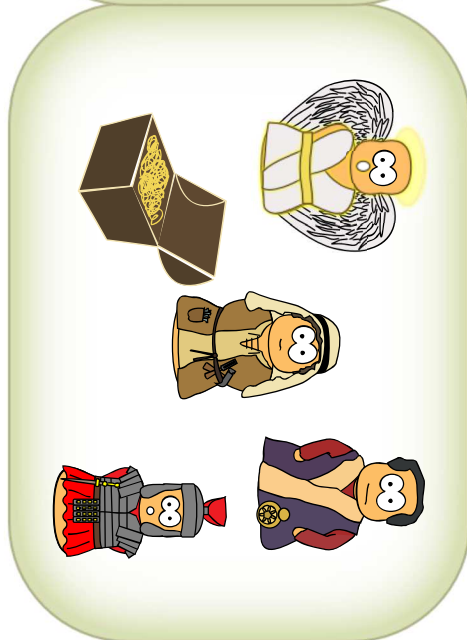
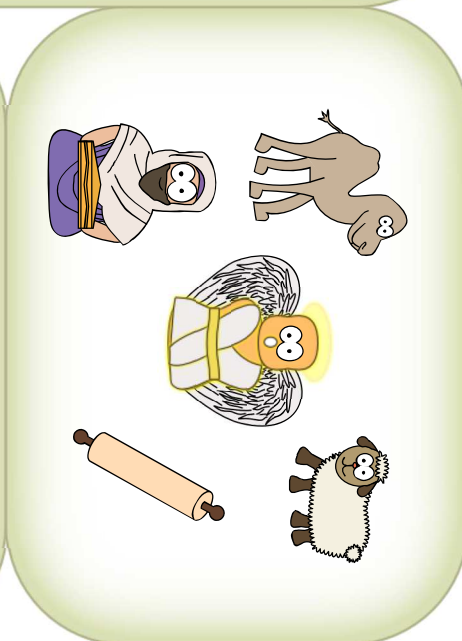
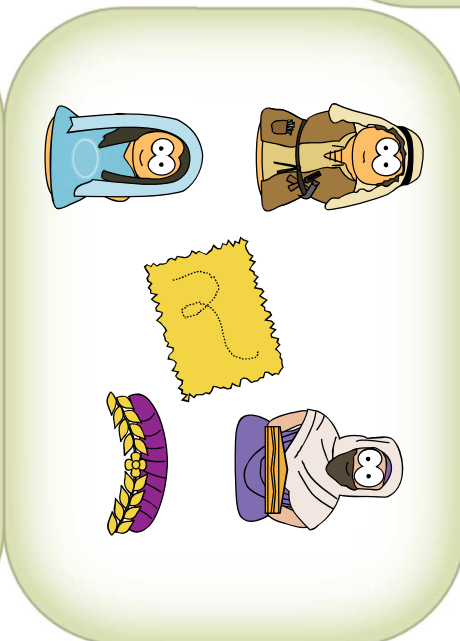
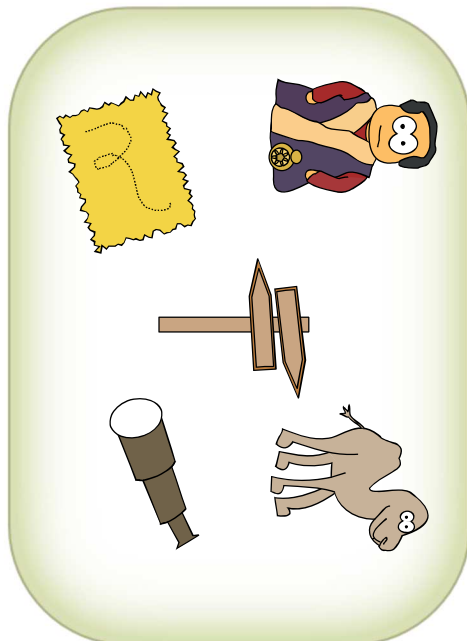
JWL
Lectionary
Resources

Cut out the 21 cards.

Match version : 2 players turn one card each and race to see who can find the matching picture. Whoever is first gets to keep both cards. You lose if you run out of cards.

Sets version : sit children in a circle with 3 cards each. Have them swap cards with their neighbours trying to get 3 matching images. (note there are 5 of each picture)

Page
1 of 3





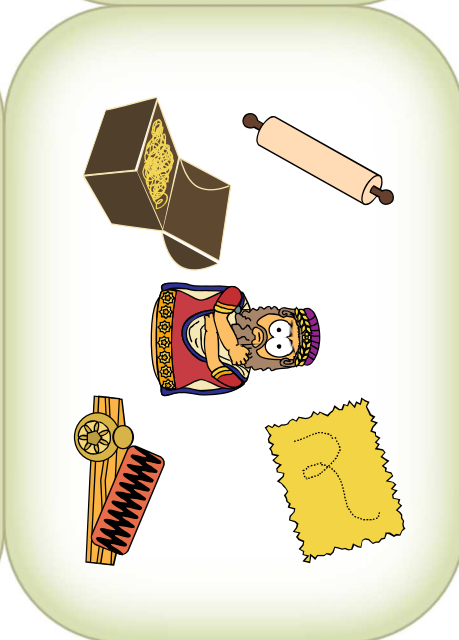
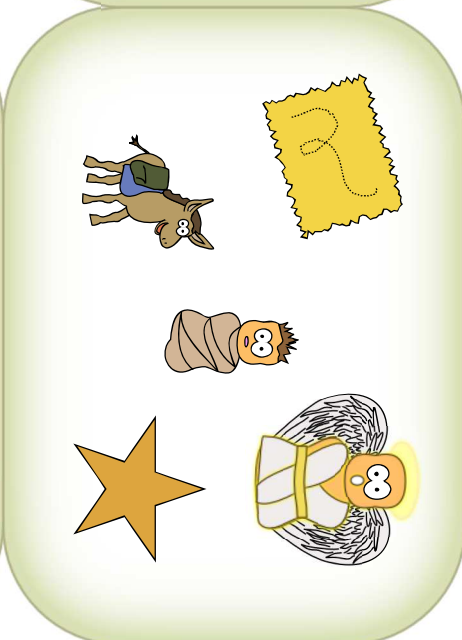
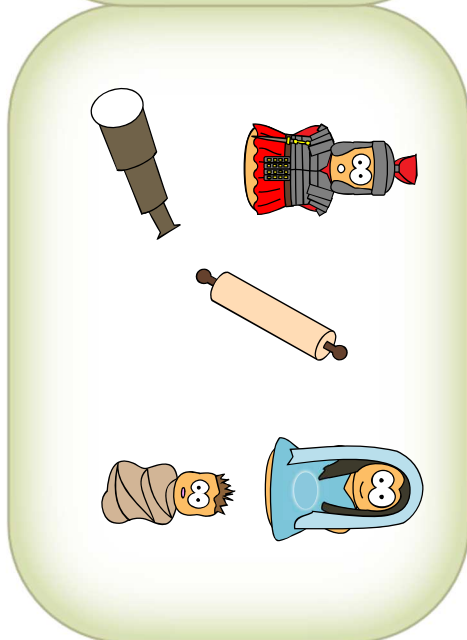
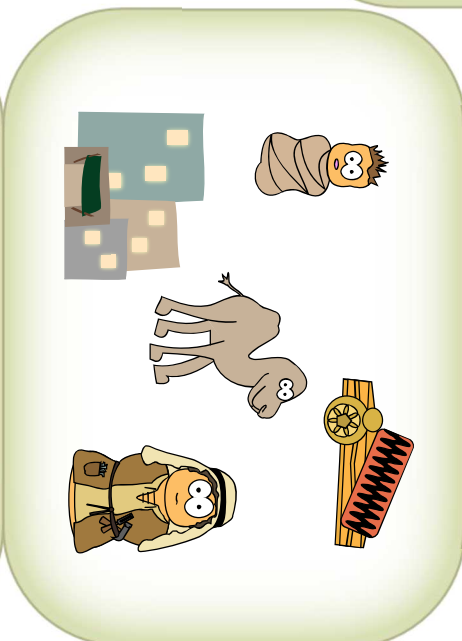
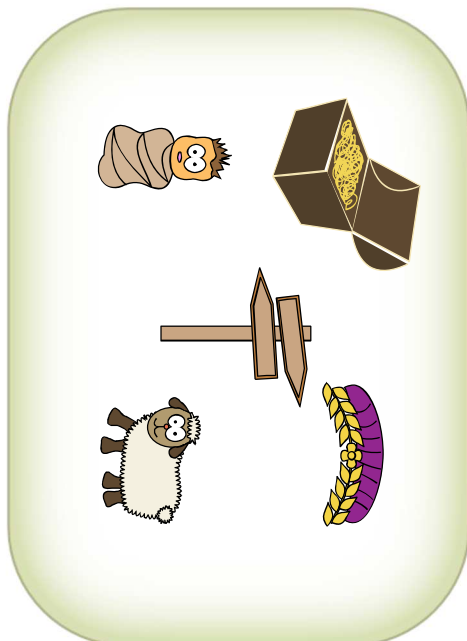
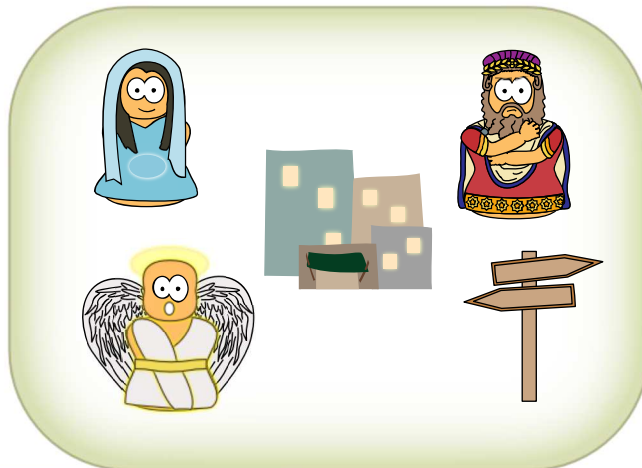
Herod the Great

Cut out the 21 cards.

Match version : 2 players turn one card each and race to see who can find the matching picture. Whoever is first gets to keep both cards. You lose if you run out of cards.

Sets version : sit children in a circle with 3 cards each. Have them swap cards with their neighbours trying to get 3 matching images. (note there are 5 of each picture)

Page
2 of 3





Herod the Great

JWL
Lectionary
Resources

Cut out the 21 cards.

Match version : 2 players turn one card each and race to see who can find the matching picture. Whoever is first gets to keep both cards. You lose if you run out of cards.

Sets version : sit children in a circle with 3 cards each. Have them swap cards with their neighbours trying to get 3 matching images. (note there are 5 of each picture)

Page
3 of 3

