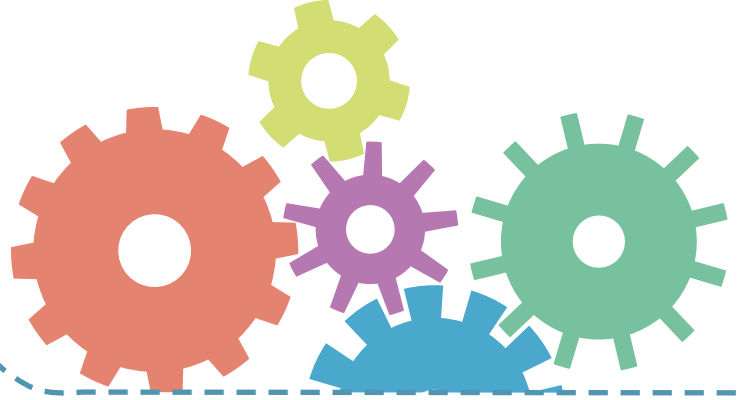


Preparing to Teach Our Setting



To be effective in teaching kids, the environment matters. You may have been blessed with a purpose built space or you may be in a glorified boom closet. From caravans outside to purpose built Bible lands here is your basic checklist for assessing your space.

3 Big Questions

1 What is the first thing a child will see?

Leave your space and re-enter on your knees if you're not sure!

2 What does your position in the building tell the children about their importance in the body of the church?

Are the kids hidden away?

3 How could you change this environment for the child?

Giving the kids a cosy blanket to sit on, screening off part of a large hall, or changing the lighting?

3 Review Lists

Environment

- Is there space for the children to move?
- Is there adequate seating arrangements?
- Is the space at a reasonable temperature?
- Is the area suitably lit so that the children can see?
- Are there any groups you may disturb with noisy activities?
- Do you have priority in this area during your teaching time?
- Is this a closed door (you won't be disturbed) or open door session?

Safety

- Do you have enough adults for the number of children?
- Do you have any children with allergies?
- Do you know your fire exits?
- Is there any area that needs to be restricted?
- Do you have access to a first aid kit and someone with first aid training?
- Are there any hazards in this area (sharp objects, trip hazards, toxic items, etc.)?
- Are the registration and release forms on hand?

Protection

- Are there any sheltered or reduced view areas?
- Are there any kids who have additional needs?
- Do all adults have clearance to work with the young?
- Do you have a policy for bathroom trips?
- Do you have a process in place for children to be picked up?
- Is there a policy for dealing with confidential conversations?
- Is there a way of storing confidential information?